



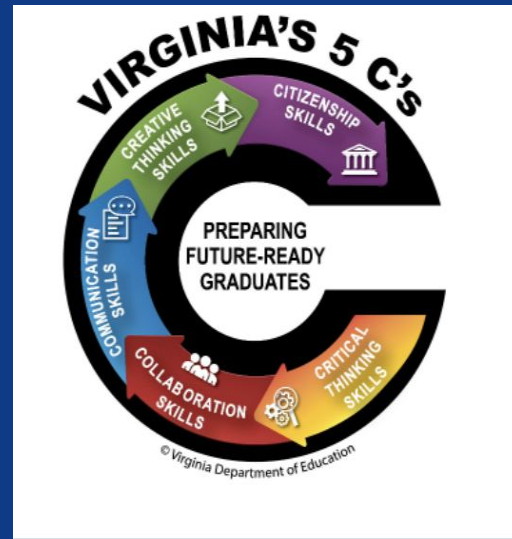
#SPSCREATESACHIEVERS

SUFFOLK PUBLIC SCHOOLS

Colonel Fred Cherry Middle
School

School Performance Plan

2023-2024





Student Achievement and Instruction



#SPSCREATESACHIEVERS

English

Problem Statement: Students with disabilities are not achieving reading proficiency due to a lack of aligned, differentiated lesson plans.

SMART Goal: By June 2024, we will increase the percentage of students with disabilities passing the reading SOL assessment from 52% to 75%.

Essential Action/Research Based Strategy/Evidence-based Intervention (Change Idea): According to WWC CFCMS ELA Teachers will - Routinely use a set of comprehension-building practices to help students make sense of the text (Tier 1 Strong Evidence).

Alignment to the Strategic Plan: Goal 1



#SPSCREATESACHIEVERS

Math

Problem Statement: Students with disabilities decreased in proficiency of math standards due to a deficit in number sense and lack of differentiated instruction.

SMART Goal: By June 2024, math students with disabilities will increase from 58% to 70% as measured by the Standards of Learning Assessment.

Essential Action/Research Based Strategy/Evidence-based Intervention (Change Idea): Implement and monitor high quality mathematics instruction based on the National Teachers of Mathematics effective teaching practices and utilize small group instruction to provide targeted interventions.

Alignment to the Strategic Plan: Goal 1



#SPSCREATESACHIEVERS

Science

Problem Statement: Many students with disabilities have deficits in Math which impact their success on the Force, Motion, Energy and Matter reporting category.

SMART Goal: By June 2024, we will increase the percentage of students with disabilities passing the Physical Science SOL assessment from 40% to 70%.

Essential Action/Research Based Strategy/Evidence-based Intervention (Change Idea): Implement and monitor hands-on inquiry (division-made labs) & common assessments to provide targeted support.

Alignment to the Strategic Plan: Goal 1



#SPSCREATESACHIEVERS



School Climate and Culture



#SPSCREATESACHIEVERS

Climate and Safety

Problem Statement: Teacher and student morale is low because of feelings of lack of engagement, support, and overall school climate.

SMART Goal: By June 2024, will increase the building morale percentage from 34% to 70%

Essential Action/Research Based Strategy/Evidence-based Intervention (Change Idea): Develop, implement, and monitor a system for student and staff recognition.

Alignment to the Strategic Plan: Goal 2



#SPSCREATESACHIEVERS



Discipline/PBIS

Problem Statement: Male students are being suspended at a higher rate than female students.

SMART Goal: By June 2024, we will decrease the percentage of male student suspensions by 10% .

Essential Action/Research Based Strategy/Evidence-based Intervention (Change Idea): Students who have been suspended Out of School due to violation of the Code of Conduct must attend a reentry meeting with guidance to come up with success strategies to reduce further violations of the Code of Conduct.

Alignment to the Strategic Plan: Goal 2



#SPSCREATESACHIEVERS

Attendance/Graduation

Problem Statement: Lack of student engagement increases the risk for discipline issues within the classroom which indirectly influences student absences.

SMART Goal: By the end of 23-24, we will reduce the number of overall student absences by 10%.

Essential Action/Research Based Strategy/Evidence-based Intervention (Change Idea): Identify and implement professional development and support to increase engagement in the classroom to positively impact student discipline.

Alignment to the Strategic Plan: Goal 2



#SPSCREATESACHIEVERS



Family Engagement

Problem Statement: Survey revealed that parents wanted more involvement.

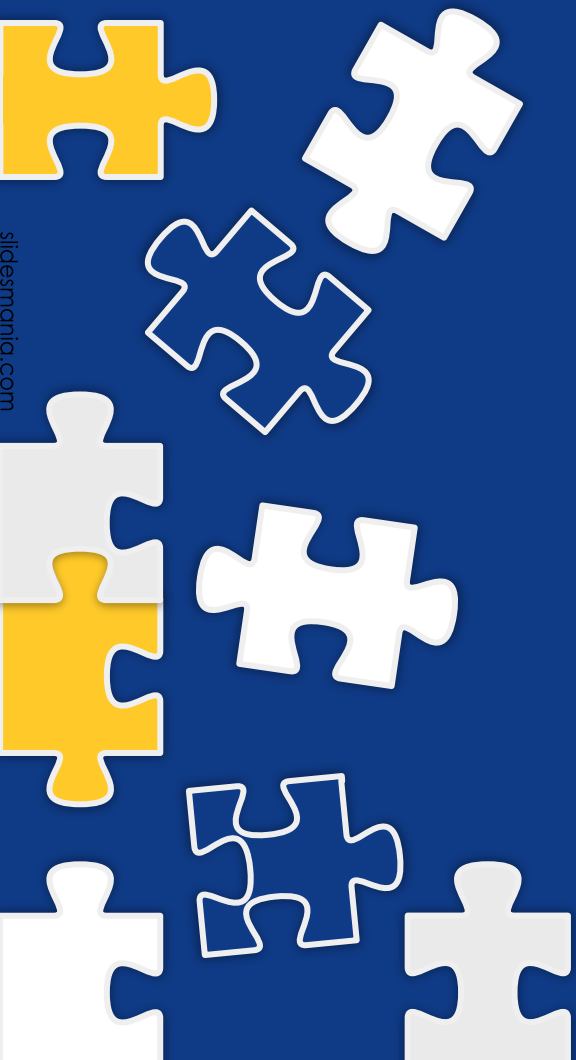
SMART Goal: During the 2023-2024 school year, CFCMS will increase parent involvement in school-wide activities by 10%.

Essential Action/Research Based Strategy/Evidence-based Intervention (Change Idea): Design, implement, and promote student achievement through schoolwide activities and encouraging parent and volunteer participation.

Alignment to the Strategic Plan: Goal 4



#SPSCREATESACHIEVERS



SOL PARTICIPATION

Problem Statement: Students are not participating in testing because of adequate preparation, communication, and attendance.

SMART Goal: The numbers of students not participating in SOL testing will decrease by 10% for the 23-24 SY.

Essential Action/Research Based Strategy/Evidence-based Intervention (Change Idea): Design and implement a communication plan to early identify students, who are participating in programs such as Home Services, and provide them support services to encourage participation in testing, clear misconceptions and misinformation, and to increase communication/support with families.

Alignment to the Strategic Plan: Goal 2



#SPSCREATESACHIEVERS